

# Child Care Information Services of Westmoreland County

## Child Care Provider Newsletter

### Department of Health

Dear Parents:

The Pennsylvania Department of Health Bureau of Family Health has oversight of the bulk of the Federal Maternal and Child Health Services Title V Block (MCHB) grant funds granted to Pennsylvania by the U.S. Department of Health and Human Services Health Resources and Services Administration Maternal and Child Health Bureau.

The Bureau of Family Health is in the process of recruiting Pennsylvania leaders and family members to serve on our Maternal and Child Health Advisory Board (MCHAB). Part of the responsibilities of this Board will be to assist in carrying out the Title V mission as well as the broader MCHB Mission ..... *The mission of the Maternal and Child Health Bureau (MCHB) is to provide national leadership, in partnership with key stakeholders, to improve the physical and mental health, safety and well-being of the maternal and child health (MCH) population which includes all of the Nation's women, infants, children, adolescents, and their families, including fathers and children with special health care needs.* For your information, I have enclosed a summary of recent accomplishments and activities undertaken by the Department of Health regarding the Title V Maternal and Child Health Block Grant (*See page 4&5 for this information*).

The Maternal and Child Health Advisory Board meetings will be held four times per year, in Harrisburg, from 10:00 AM - 3:00 PM at barrier free facilities. Board members will be reimbursed for travel expenses to Board meetings according to approved State Travel rates upon submission of a state travel expense voucher.

I am pleased to extend this correspondence to solicit a letter of interest or a resume from you to serve on the MCHAB.

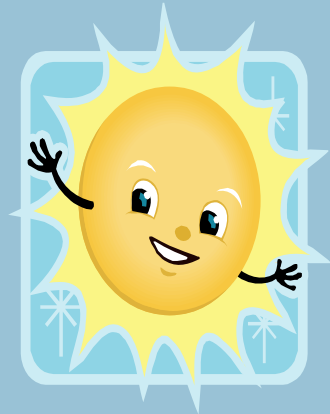
Please reply to: Ms. Melita Jordan, Director, Pennsylvania Department of Health, Bureau of Family Health Attn: MCH Advisory Board Health & Welfare Building 7<sup>th</sup> Floor East Wing, 7<sup>th</sup> & Forster Streets Harrisburg, PA. 17120-2675

Sincerely,  
Melita J. Jordan, CNM, MSN, APRN C Director  
Bureau of Family Health

## Annual Ice Cream Blast

ParentWISE, Inc. will host the 12<sup>th</sup> Annual Ice Cream Blast on Saturday July 21 from noon until 4:00pm at Kirk S Nevin Arena at Lynch Field in Greensburg PA. Admission is \$3.00 per guest and includes Bruster's Ice Cream, cake and a soft drink plus over fifty booths of crafts, games and entertainment for children of all ages. Raffles, auctions and additional refreshments are available for an additional charge.

Vendors may still register for booth space by contacting:724-837-5410



#### Inside this issue:

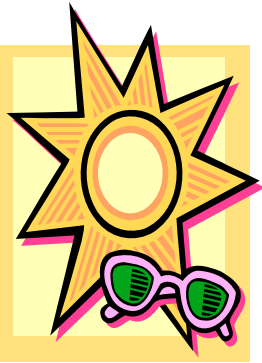
Egg Carton Ant Project 2

Resource and Referral Report 3

Child Health Services Title V Block Grant To States Program 4

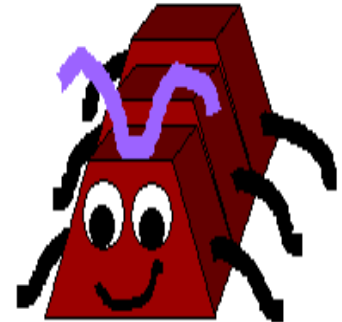
Child Health Services Title V Block Grant To States Program 5

# Egg Carton Ant



This is another faithful old craft idea that I've done with my daughters and, way back when, as a child myself. Accompany it with a tasty snack of "ants on a log" (cheese whiz coated celery sticks sprinkled with raisins), a rousing song of "[The Ants Go Marching](#)" and a fun children's story like [The Little Red Ant and the Great Big Crumb](#).

The ant craft is fairly correct from an anatomic standpoint -- three body parts (head, thorax and abdomen), 6 legs and 2 antennae



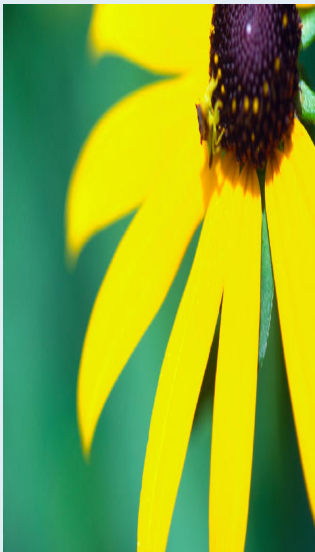
## Materials:

- cardboard egg carton - you need three cups attached
- scissors
- yellow, brown, red or black tempera paint (or another color if you want to make a creative ant)
- paint brush
- 4 pipe cleaners (chenille) -- three for legs and one for the antenna
- sharp pencil
- wiggly eyes, 2 cheerios or 2 fruit loops
- black marker
- Glue

## Instructions:

- cut a strip of cups (3 cups) from the egg carton -- adults can do this before craft time.
- paint the cups and let dry .
- using a sharp pencil, poke two holes in the top of the first cup -- adults can do this step before craft time.
- from inside the cup, poke both ends of the pipe cleaner through the pencil holes (one end through each hole) to make antennae.
- using a sharp pencil, poke one hole on each side of each cup (6 holes in total) -- again, adults can do this step.
- Push a pipecleaner through the holes in the first cup.
- Make the same amount of pipecleaner stick out the sides -- these are two legs -- you can bend little feet into the ends of the pipecleaner if you like.
- Repeat with the second cup and third cup.
- You should end up with 6 legs when you're through .
- glue the wiggly eyes onto the head (you could substitute 2 cheerios or 2 fruit loops) .

OPTIONAL: draw on a mouth with black marker



**CCIS of Westmoreland County  
Resource and Referral Local View Report**

Results from 1/1/07 – 3/31/07

In the period from 1/1/07 through 3/31/07, a total of 272 Referrals were performed for 179 clients. The following chart is a compilation of what families are requesting.

**Keystone Stars**

Star 1	Star 2	Star 3	Star 4
1	1	1	1

**Care Levels**

Infant	Young	Older	Preschool	Before/After	Young	Older School
57	43	35	78	22	31	5

**Special Accommodations**

Administer Medication	Behavioral / Emotional Issues
1	1

**Schedules**

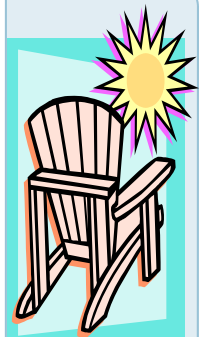
Saturday	Sunday	3 <sup>rd</sup> Shift	Overnight	Evenings
24	16	1	3	25

**Where calls are coming from (Areas)**

Monessen	New Ken	Irwin	Greens- burg	Mt. Pleasant	Latrobe	Delmont	Jeannette	New Stanton	New Florence
14	22	22	46	19	15	13	13	4	6

**Care Settings**

Center	Group Day Care Home	Family Day Care Home
234	221	227



## The Maternal and Child Health Services Title V Block Grant To States Program

As one of the largest Federal block grant programs, Title V is the key source of support for promoting and improving the health of all the Nation's mothers and children. When Congress passed the Social Security Act in 1935, it contained the initial key landmark legislation which established Title V. This legislation is the origin of the Federal Government's pledge of support to States and their efforts to extend and improve health and welfare services for mothers and children throughout the Nation.

### Appropriations to States for the purpose of

- to improve health of all mothers and children
- to provide and assure mothers and children access to quality maternal and child health services
- to reduce infant mortality, preventable diseases and handicapping conditions among children and to increase the number of immunized children.

### MCH Population Served

The Title V Federal-State partnership provides dynamic programs to improve the health of all mothers and children, children with special health care needs as well as the following:

- Mothers, Pregnant Women, infants to Age 1
- Children and adolescents up to 21
- Children and Youth with Special Health Care Needs
- 474,738 Pennsylvanian's were served by Title V program in 2004.

### Pennsylvania's MCH Priorities

The Bureau of Family Health's top 10 priorities closely reflect the results of the statewide needs analysis conducted in 2005 and include:

- Addressing health disparities in the rates of low birth weight and premature birth;
- Improving statewide access to prenatal care and labor and delivery services;
- Promoting smoking cessation in pregnancy;
- Improving oral health of children and adolescents;
- Increasing access to childhood lead screening;
- Promoting the health and wellness of school age children;
- Strengthening health and physical education activities within the schools;
- Increasing coordination of programs serving CSHCN;
- Increasing the utilization of the Medicaid EPSDT Program
- Increasing the availability of MCH program data.

### Bureau of Family Health, MCH Block Grant-Funded Program Accomplishments

Division of Child and Adult Health Services

#### Lead Section:

- The Lead Hazard Control Program provided the City of Philadelphia with a total of \$1,000,000 in MCH Block Grant funds during the State Fiscal Years 2004-05 and 2005-06. With these funds, the City made 85 homes lead-safe for low-income families with young children, thus helping to reduce and prevent childhood lead poisoning.

#### Shaken Baby Program:

- The Pennsylvania Department of Health currently funds the Pennsylvania Shaken Baby Syndrome Prevention and Awareness Program in the amount of approximately \$100,000 annually. This program seeks to increase awareness of new parents on the dangers of shaking a baby. Medical care over the lifetime of a child that suffers from Shaken Baby Syndrome can easily surpass the million dollar mark. These costs are in addition to costs associated with foster care, counseling, legal issues and county agency investigations.

#### Perinatal Systems:

- The Department of Health funds Pennsylvania's County/Municipal Health Departments through the Title V Block Grant Program to promote the health of the maternal, child, and children with special health care needs. Local Health Departments develop primary and preventive maternal and infant services to address issues of low birth weight babies, prenatal care support services, positive health, and a wide array of other services to address local needs of families within each jurisdiction.



## **Division of Community Systems Development and Outreach**

### **Health and Human Services Call Center:**

- HHSC houses a consolidation of information and referral lines serving the Departments of Health, Insurance, Public Welfare and Aging. Due to the consolidation & cross training, callers receive information & referrals for multiple services in one call. During SFY 05-06, the HHSC answered 141,171 calls. Title V Maternal and Child Health Block Grant level of funding amounts to \$835,116. These funds cover the Department's portion of the Healthy Baby, Healthy Kids helplines, co-funded by the Departments Insurance & Public Welfare, as well as all of the costs for the Special Kids Network. Services include answering phones, providing information about & referrals to services, packaging, & mailing materials.
- During SFY 05-06, the HHSC assisted 2,471 callers in completing and electronically submitting COMPASS applications for health care coverage. In response to callers' requests, HHSC mailed 23,791 CHIP, 13,784 Medicaid, and 644 Medicaid Disabled Child applications. 121,617 items were mailed by the Lead Information Line and 4,949 items by the Brain Injury Helpline.

### **Medical Home Program:**

- Initiated in 2002, the Educating Practices in Community Integrated Care (EPIC-IC) Medical Home Training Program is administered by the Pennsylvania Chapter, American Academy of pediatrics. The EPIC IC Program has prevented over 200 hospitalizations and almost 700 emergency doctor visits from the period October 2006 to February 2007. Future cost benefit modeling with parent and insurance data can translate this savings into real time dollars. In addition, care coordination and the EPIC IC program has favorably impacted the quality of life of both parents and CYSHCN with preventing almost 400 school days missed and over 250 parental work days missed.

## **Division of Newborn Screening and Genetics**

### **Newborn Screening and Follow-Up Program:**

- NSFP oversees testing of newborn blood specimens by two contracted newborn screening laboratories, provides follow-up for abnormal test results and distributes metabolic formula to eligible clients.
- In 2005, NSFP provided screening on 143,380 newborn filter paper submissions. A total of 212 newborns were diagnosed with one of the six state-mandated conditions compared to (232) cases in 2004 [congenital hypothyroidism-65 (68); congenital adrenal hyperplasia-10 (11); sickle cell disease and hemoglobinopathies-92 (83); phenylketonuria-27 (29); maple syrup urine disease-1 (2); and galactosemia-17 (39)].

### **Genetic Services Program :**

- The Genetic Services Program provides genetic screening and genetic counseling services to low-income individuals and families seeking information about the occurrence, or risk of occurrence, of a genetic condition or birth defect.
- Birth defects, also referred to as congenital anomalies or malformations, are the leading cause of infant mortality in the United States.
- In Pennsylvania, approximately two (2) out of every 100 babies are born with a birth defect. Babies born with birth defects have a greater chance of illness and long-term disability than babies without birth defects.

### **Newborn Hearing Screening and Intervention Program :**

- The DOH program carries out the provisions of Pennsylvania's Infant Hearing Education, Assessment, Reporting and Referral Act (IHEARR-Act 89 of 2001) to assure that all newborns are screened for hearing loss within the first 30 days, diagnosed within the first 3 months, and receive treatment and intervention services within 6 months of birth.
- Pennsylvania's overall newborn hearing screening rate of 96.8% for 2005 births was well above the national average of 92.8%.
- The screening rate has remained above 98% since FY 2003, while the rescreening rate for newborns who failed initial screening has climbed steadily from 87% in 2003 to 90% in 2006. The number diagnosed with hearing loss has risen steadily from 165 for 2003 births to 256 for 2005 births.





**Child Care Provider Newsletter**

Child Care Information Services of  
Westmoreland County  
766 East Pittsburgh St. Suite 202  
Greensburg PA 15601

Phone: 724-836-4580  
Fax: 724-836-5415  
Toll : 1-800-548-2741

**We're on the Web:**

**cciswestmoreland.com**

Child Care Information Services of Westmoreland County  
766 East Pittsburgh St. Suite 202  
Greensburg PA 15601

\*\*\*\*\*

Please make note that some changes have occurred in the fiscal department. Lynn Stepanik and Christine Smith have moved to the eligibility department. We are in the process of restructuring and replacing these positions. In the interim, when calling for assistance please ask for an invoice assistant for payment and invoice related issues and a provider specialist for agreement issues.

\*\*\*\*\*

Eligibility Dept - 411

As of June 2007 this is the condensed 411 on the Eligibility Department. Feel free to keep this close by for a quick reference when calling in to office.

<b>Unification CAO Clients</b>	<b>Intake-Funds A, T and C Clients</b>	<b>Case-Funds A, T and C</b>
Chris - Ext 131 A-J	Lynn - Ext 132 (initial application calls)	June - Ext 126 A-F
Gwen - Ext 130 K-Z	Yvonne - Ext 115 (apps/enrollment)	Josie-Ext 114 G-M
		Kathy-Ext 127 N-Z

